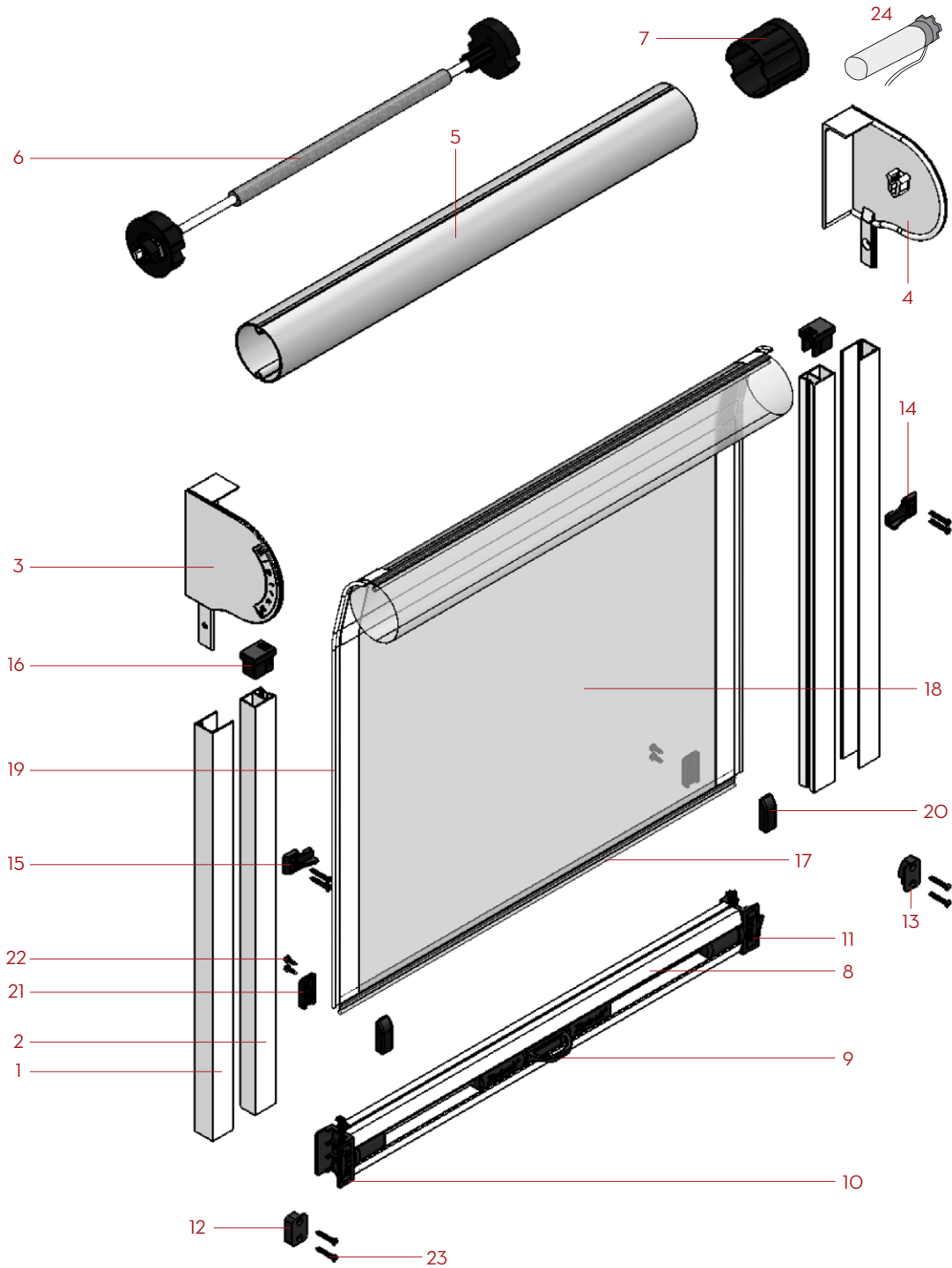


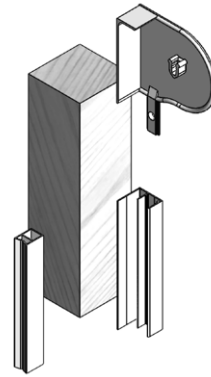
# ZIPTRAK®



- |    |                                 |    |   |    |  |
|----|---------------------------------|----|---|----|--|
| 1  | 30x25mm Bracket Channel         |    |   |    |  |
| 2  | Ziptrak® Track                  |    |   |    |  |
| 3  | Left Hand Cast End Bracket      |    |   |    |  |
| 4  | Right Hand Cast End Bracket     |    |   |    |  |
| 5  | 63mm Keyway Tube                |    |   |    |  |
| 6  | 63mm Ziptrak® Smoothline Spring |    |   |    |  |
| 7  | 63mm Idler Cap                  |    |   |    |  |
| 8  | Ziptrak® Bottom Rail            |    |   |    |  |
| 9  | Centre Lock Release Handle      |    |   |    |  |
| 10 | Left Hand Bottom Bar Guide      |    |   |    |  |
|    |                                 | 11 | Right Hand Bottom Bar Guide with Locking Tongue | 18 | 0.75mm Clear PVC Skin                                      |
|    |                                 | 12 | Left Hand Lock Catch                            | 19 | HT Polyester Side Spline Tape                              |
|    |                                 | 13 | Right Hand Lock Catch                           | 20 | Fabric Clamp (No Holes Part)                               |
|    |                                 | 14 | Right Hand Top Stop                             | 21 | Fabric Clamp (Holes Part)                                  |
|    |                                 | 15 | Left Hand Top Stop                              | 22 | #6 x 1/2" Stainless Steel, Pan Head Screw                  |
|    |                                 | 16 | Guide Funnel                                    | 23 | #8 x 25mm Counter Sunk, Self Drilling Screw, Class 3 Galv. |
|    |                                 | 17 | Top & Bottom Extruded PVC Spline Tape           | 24 | Motor - automation   |

### FACE FIX CHANNEL

Offers versatility to a Ziptrak installation and is used when mounting the Ziptrak side channel on the face of a surface rather than inserting the blind between posts.



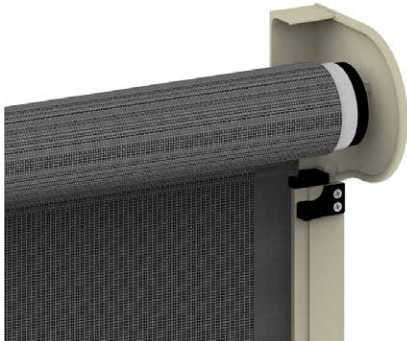
---

### CENTRE LOCK RELEASE

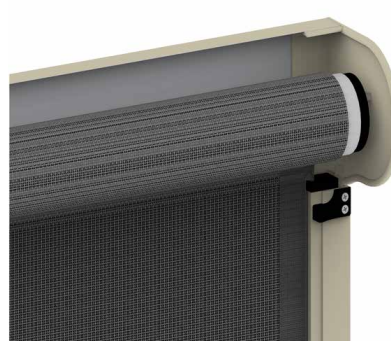


---

### CAST BRACKET



### CAST BRACKET WITH FLASHING



### FULLY ENCLOSED PELMET

