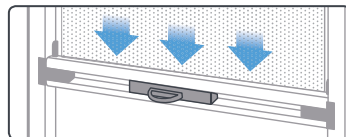


## AFTER INSTALLATION

PVC and Sunscreen Mesh blinds have been rolled up for transportation. You may need to leave the blinds down for several days to allow the material to settle.



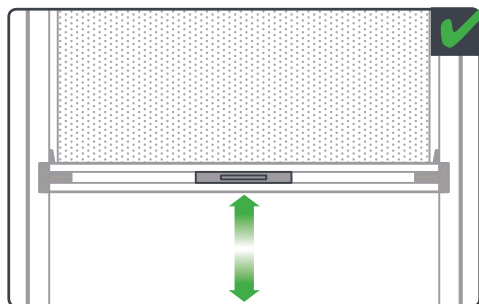
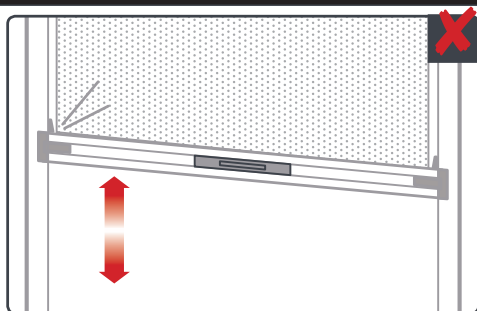
## OPERATION

**Ziptrak<sup>®</sup> blinds are easy and simple to use, providing a smooth glide for years of care-free operation. If it is difficult to raise or lower your blind for no obvious reason, please contact your Ziptrak<sup>®</sup> retailer.**

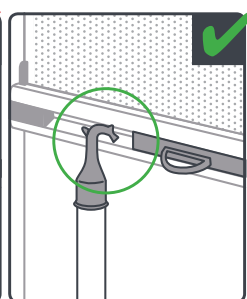
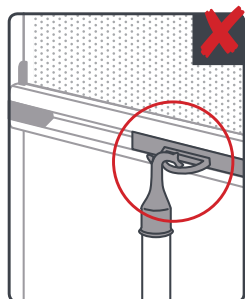
### Spring-balanced

Spring-balanced blinds allow you to easily lower or raise the blind, with a sophisticated spring that supports the weight of the blind. The blind should be hand-operated from the centre of the bottom bar. This ensures the material rolls evenly onto the top tube. The blind should always glide smoothly and easily along the track.

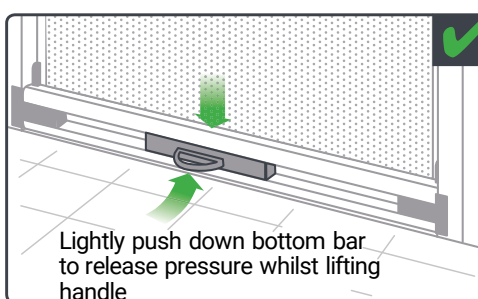
### Always operate the blind from the centre



### How to use the pull stick

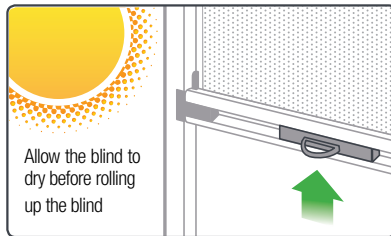
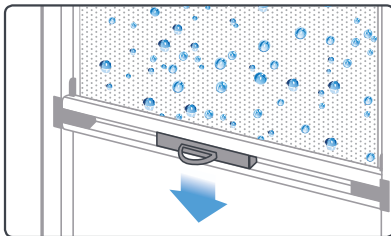


### How to unlock the blind



## Avoid rolling up the blind when it is wet

Moisture within the rolled up blind material may cause mould to form.



Allow the blind to dry before rolling up the blind

## WINDY CONDITIONS

Ziptrak® blinds are trusted by thousands of New Zealand homes and businesses to provide an enjoyable outdoor living space. The strong and robust system is commonly installed throughout coastal regions and locations prone to high winds.

You may find Ziptrak® spring-balanced blinds are a little tricky to operate during windy conditions due to the pressure of the wind on the blind material. Use your hand to push against the blind material to reduce this pressure and then operate the blind.

In windy conditions, blinds should be left down and locked, or fully retracted – half way is the most vulnerable position. During severe weather events, your blinds should be fully retracted.

## CLEANING

### Sunscreen Mesh Blinds:

- Clean the blind with a soft cloth and soapy cold water, or Straitline Patio Blind Cleaner. Use a heavily diluted household detergent such as dish washing soap.
- Never apply full strength detergents, cleaning fluids, soaps, insecticides or garden sprays. Do not use bore water or allow bore water sprinkler systems to wet the blind. Never allow petrochemicals or solvents to touch the blind.
- Do not use a high pressure hose to clean the blind.

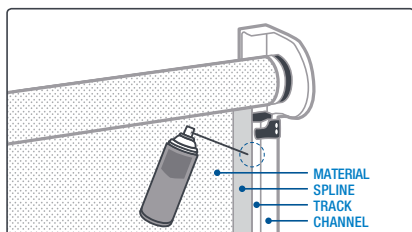
### PVC Blinds:

- **Do not** use window cleaning detergents to clean the PVC.
- Clean the blind with a soft cloth and soapy water.
- Never allow bird droppings, dirt or stains to remain on the PVC for long periods of time.
- The PVC surface is highly sensitive to scratching and marks. Always be cautious when cleaning, operating or moving items around PVC blinds.
- Ideally, use a soft, clean cloth to polish and dry the PVC after cleaning and prior to rolling up the blind. ■ Do not use a high pressure hose to clean the blind.

## MAINTENANCE

Ziptrak® Blinds require re-lubrication every three to four months.

To apply, lower the blind all the way; evenly apply the spray in the groove between the spline and the track. Do this for the front of the blind only, on both the left and right sides. After lubrication, open and close the blind several times to evenly distribute the silicone spray within the track.



It is very important that you do not use any oil based lubricants such as WD40, as they will damage the spline tape and clog the dust that may be within the track.